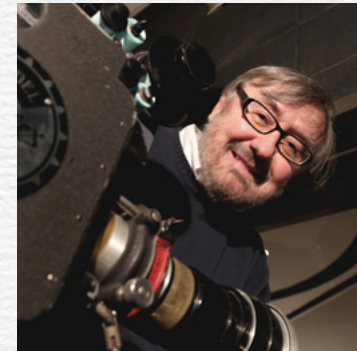
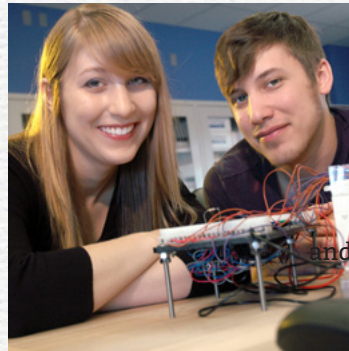


# C O N T I N U I N G   T H E   P R O M I S E



## ANNUAL REPORT

2013/2014

 *Lorain County  
Community College*  
**FOUNDATION**  
*Providing the margin of excellence.*





### Tuition Guarantee

- ◆ New, full-time students and current part-time students will receive a tuition lock for a maximum of three years
- ◆ Students sign completion pledge agreeing to maintain continuous full-time enrollment and create an academic plan to keep them on target

### MyUniversity

- ◆ High school students can earn associate's degree and high school diploma simultaneously
- ◆ Students will earn bachelor's degree by age 20 while enjoying a full high school and college experience

### MyEmployer Guarantee

- ◆ Employers who hire an LCCC graduate can use up to 15 credit hours of coursework to enhance their skills if necessary
- ◆ Employers who partner with LCCC's Entrepreneurship Innovation Institute will receive 10 hours of talent planning, assessments and recruitment services at no cost



Dear Friends,

In 1973, early leaders in our community had the foresight to establish the Lorain County Community College Foundation as the direct support organization for Lorain County Community College. For the past 41 years, the Foundation has worked tirelessly to uphold our promise to help the College obtain a margin of excellence that would otherwise be left unfulfilled.

This year, Lorain County Community College unveiled *Our Promise* – an initiative to ensure that students can reduce the time and cost it requires to complete a degree while guaranteeing they will be fully prepared and employable upon graduation. The Foundation is continuing its promise to support Lorain County Community College by raising dollars to advance the four cornerstones of the College's mission – *Education, Economy, Community and Culture*. These four cornerstones represent the heart of what Lorain County Community College is all about and *Our Promise* enhances each of these to create a stronger organization, a more educated community and a better-prepared workforce.

As you review our Annual Report, please consider a philanthropic contribution to help our students, the college, and ultimately our community, excel.

Sincerely,

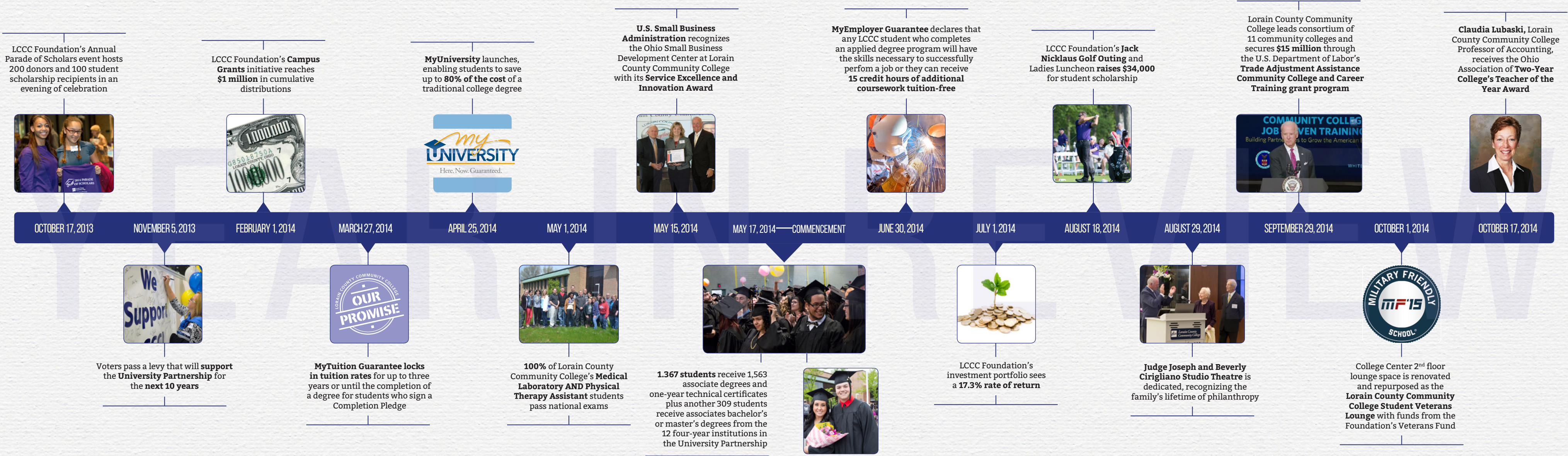
Garis Distelhorst  
Executive Director

## CONTENTS

◆ YEAR-IN REVIEW . . . . .	1,2
◆ SCHOLARSHIP SPOTLIGHT . . . . .	3,4
◆ EDUCATION CORNERSTONE. . . . .	5,6
◆ ECONOMIC CORNERSTONE . . . . .	7,8
◆ COMMUNITY CORNERSTONE . . . . .	9,10
◆ CULTURE CORNERSTONE . . . . .	11,12
◆ LCCC FOUNDATION BOARD OF DIRECTORS . . . . .	13
◆ LCCC FOUNDATION STAFF . . . . .	14
◆ STATEMENT OF FINANCIAL POSITION . . . . .	15
◆ AREAS OF IMPACT AND POINTS OF PRIDE . . . . .	16



2013 - 2014 TIMELINE







### CAMPUS COMMUNITY REMEMBERS NANCY KELLEY THROUGH SCHOLARSHIP FUND

Professor Nancy Kelley was part of the Lorain County Community College family for more than 20 years. During her career, she served as the President of the Ohio Communication Association, received Outstanding Faculty Recognition from the Ohio Association of Two Year Colleges, served as the Adjunct Faculty Mentor and Coordinator for Arts & Humanities, and as the Director of LCCC's Communications Program.

Looking for a way to celebrate her life and continue her impact on campus, several of her family members and colleagues established the **Nancy Kelley Memorial Communications Scholarship**. This fund is a true testament to the love the LCCC campus community has for Nancy their willingness to come together to create a lasting legacy.



### TIFFANY TARPLEY LORAIN COUNTY COMMUNITY COLLEGE SUCCESS STORY

Tiffany Tarpley, a morning news reporter for WKYC Channel 3, got her start right here at Lorain County Community College. An only child, Tiffany grew up in Lorain, graduated from Admiral King High School in 1998 and received a scholarship for Lorain County Community College that paid her way for the first three full years of her education. When she began taking courses, Tiffany was unsure of her career path. However, after taking Oral Communications taught by the late professor, Nancy Kelley, Tiffany's future became clear. Following Professor Kelley's advice, Tiffany explored telecommunications courses and got hands-on experience editing video, creating storyboards, and being on camera. After years of hard work, Tiffany's dream of becoming a reporter has come true.

– **Tiffany Tarpley**

**“When you have great instructors - great teachers who are motivators and who want to see you succeed - that is the most important thing. That is what Lorain County Community College provided.”**



### SUPPORTING SCHOLARSHIPS AT LORAIN COUNTY COMMUNITY COLLEGE

Collectively, the students at Lorain County Community College represent the future of our community. Many of tomorrow's business leaders, inventors, entrepreneurs, teachers, and more get their start right here at Lorain County Community College and the University Partnership. As a group of nearly 15,000 students each year, these students have the potential to greatly impact Lorain County and our region. Yet individually, each of them has a story – a motivating factor that has driven them to succeed along with any number of obstacles threatening to impede their success. **In fact, more than 60% of our student body requires financial assistance.**

By supporting student scholarships, the LCCC Foundation fulfills its critical role of helping our students overcome these barriers and achieve their academic goals. The Foundation manages more than 180 scholarship funds and expects to distribute nearly \$600,000 to more than 850 LCCC and University Partnership students during FY 2014-15 – often times giving these students the last bit of hope needed for them to achieve their academic and career goals.

### ENDOWED SCHOLARSHIP FUNDS

Many of the Foundation's endowed funds are established in memory of a loved one who has passed away, creating a lasting legacy for the family while helping students each year. Endowed funds can be established with a minimum donation of \$10,000. The corpus of the fund is invested according to the Foundation's Investment and Allocation Policy, with a portion of the earnings distributed annually for scholarship awards.

### ENDOWED FUNDS CREATED DURING 2013-2014

- Paul C. Balcom Health Careers Scholarship Fund**
- N. Irene Baumler Memorial Scholarship**
- Margaret Mary Baptiste Presidential Scholarship**
- Dr. Cathy Dietlin Scholarship Fund for Secondary Education Majors**
- Nancy Kelley Memorial Communication Scholarship**
- James Kidd Scholarship in Allied Health**
- Leo Koury Scholarship Award Supported by the Dr. Alfred J. Loser Memorial Scholarship Fund**
- Dr. Richard R. and Nancy A. Mellott University Partnership Scholarship**

**DURING 2013-2014, THE LCCC FOUNDATION  
DISTRIBUTED \$581,000 TO MORE THAN  
800 STUDENTS IN SCHOLARSHIP SUPPORT.**





## SIXTO TORRES

### FROM EARLY COLLEGE GRADUATE TO MASTERS CANDIDATE

Through Lorain County Community College's Early College High School program, Sixto Torres became the first in his family to earn a college degree. By the young age of 16, Sixto was taking all college courses with the intent to earn his Associate of Arts degree by age 18 – a goal that he accomplished successfully. Sixto tributes his success during those early days to the fact that he was often the “only kid” in his classes – and the older students encouraged him to elevate his behavior, his study skills, and his goals.

Today, Sixto is traveling internationally as he pursues his Global Masters of Business Administration degree through Case Western Reserve University. On track to graduate at age 23, Sixto has plenty of time to make an impact locally and globally. By the time he graduates, Sixto will have completed three semesters internationally – gaining hands-on experience that he hopes to use to launch his own business right here in Lorain County.



Here. Now. Guaranteed.

Unveiled earlier this year, MyUniversity is an innovative approach to maximizing time, dollars and effort for local high school students. The program is available to students in Lorain County and enables them to earn their associate's degree simultaneously with their high school diploma. Participating students will then be on track to graduate with their bachelor's degree by age 20 – saving up to 80% of the cost of attending a four-year institution.

A key component to MyUniversity is LCCC's University Partnership, which offers more than 40 different associates bachelor's and master's degrees by leading universities available right on LCCC's campus. Once students complete their associate degree through MyUniversity, they are automatically considered for scholarship funds to help them complete their bachelor's degree.

The Foundation has nearly \$100,000 designated specifically for University Partnership students and each year an average of 100 students use these awards to bridge the financial they face regarding tuition.

## LCCC FOUNDATION'S IMPACT

### SUPPORTING FACULTY

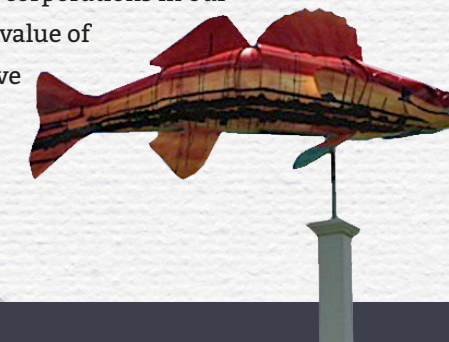
In addition to the Foundation's scholarship support, the Foundation also funds several programs that recognize and assist our innovative faculty. These programs encourage LCCC's faculty to develop new teaching methods, interactive classrooms, and hands-on experiential learning for students – truly providing them with a unique educational experience whether they are earning their associates, bachelor's, or master's degree during their time at Lorain County Community College.



### CAMPUS GRANTS REACHES \$1 MILLION IN DISTRIBUTIONS

The Foundation's Campus Grants are awards for projects proposed by faculty and staff that enhance teaching and learning. Established 14 years ago, the program has provided financial resources for more than 1,710 projects, including the popular Follow-the-

Fish campaign, a Welding Workshop for Women and a Medical Mission to the Dominican Republic spanning all academic disciplines. This year, the program reached a significant milestone as it surpassed the \$1 million mark in grants distributed. Funding for this program comes from generous individuals and corporations in our community who recognize the value of higher education and its positive impact on our community.



### FACULTY EXCELLENCE AWARDS

During the Commencement Ceremony each year, two of Lorain County Community College's most outstanding faculty are recognized as part of the LCCC Foundation's Faculty Excellence Awards program. The Foundation awards \$2,500 to each individual who demonstrates ingenuity in classroom teaching, educational practices, and curriculum development, while also providing exemplary service to impact the college and the greater community. The 2014 awardees were Professor Michelle Yuhasz and Professor Claudia Lubaski.







## NORDSON CORPORATION FOUNDATION PARTNERS IN PHILANTHROPY

Corporate partnership and philanthropy represent a core component of the LCCC Foundation's Advancement Model. The Foundation recognizes the only way we can truly make a difference in Lorain County's economic landscape is to walk side-by-side with those organizations in our community who are committed to making a difference through their philanthropic efforts. One such organization is The Nordson Corporation Foundation.

Through partnership, the LCCC Foundation has enabled The Nordson Corporation Foundation to focus giving on their core values of providing access to education, student exposure to STEM fields and entrepreneurship. Over the years, Nordson Corporation Foundation has supported start-up companies through the LCCC Foundation's Innovation Fund, encouraged students of all ages to discover an interest in technical fields through sponsorships of the Lego Olympiad and the Science Olympiad, and provided financial assistance to students through several scholarship funds. Their dedication to helping Lorain County and its residents advance is unmatched and we are so thankful for their continued support.



The Nordson Corporation Foundation has been making a difference through philanthropy since 1952. Established by Walter G. Nord, the founder of Nordson Corporation, the company's Foundation follows a philosophy of corporate giving that has carried through more than four decades. During that span of time, Nordson Corporation Foundation has become a true partner in philanthropy with Lorain County Community College, and their giving has impacted students of all ages as well as entrepreneurs.

*The Nordson Corporation Foundation's Giving Philosophy: "Nordson Corporation, as a corporate citizen of communities where it does business, will recognize its social responsibilities by sharing its financial success in ways that improve the quality of life for its employees, their families and its neighbors."*



The Desich Business and Entrepreneurship Center

## THE ENTREPRENEURIAL CONTINUUM AT LORAIN COUNTY COMMUNITY COLLEGE

In an effort to renew the innovative spirit that was once alive and well in Northeast Ohio, Lorain County Community College has established a core focus on providing entrepreneurial resources to students and the community. The College now offers a continuum of services that support the needs of entrepreneurs at any stage of business development—from those just forming an idea to those expanding existing companies into new markets. Through strategic partnerships and collaboration, Lorain County Community College offers everything from business advising to seed funding to commercialization. Collectively, these services are getting businesses off the ground and creating jobs.



A significant component of the Entrepreneurship Continuum is the Innovation Fund. Founded by the Lorain County Community College Foundation in 2007, the Innovation Fund (IF) was one of the four original funds supported in the Northeast Ohio Entrepreneurial Signature Program. Focused on filling a recognized funding gap very early on within the company growth continuum, the IF supports startups that are in the imagining or incubating stages of development and are located (or willing to locate) within Northeast Ohio. As the metrics show, the impact has been staggering – demonstrating that Lorain County's innovative spirit has certainly been rejuvenated.

Activity and A Metrics Update	
Activity	Impact
>5,610 inquiries	\$175 mil follow-on funding
1001 accepted applications	\$74.8 mil sales revenue
161 awards*	>165 internships
137 companies*	>475 jobs
\$9.085 mil value of awards*	\$40k – \$120k salary range

\*Data reported thru Cycle 12 (June 2021)







## FOUNDATION BOARD FEATURE

### MR. THOMAS PILLARI

The Foundation's Board of Directors consists of 55 leaders who bring their expertise from a variety of industries and organizations throughout Lorain County. Many of these Directors have been long-standing members of the board, dedicating countless hours of their time to strengthen the Foundation.

One such leader is Mr. Thomas Pillari, who has served on the board since 2002, most recently completing two full terms as the Foundation's Board Chairman (January 1, 2009 through December 31, 2014). Mr. Pillari's leadership has been nothing short of inspiring and his contributions are certainly worthy of recognition as his term as Chairman comes to a close.

*"Tom has been a guiding force in the Foundation's growth over the past 12 years. His uncompromising dedication combined with his kindness and sense of humor have truly united the Foundation's Board in a way never accomplished before."*

*-Dr. Roy Church, President*

Scholarship Golf Benefit, Mr. Pillari successfully secured sponsors and participants each year, including his own firm, Wickens, Herzer, Panza, Cook & Batista Attorneys at Law, as co-sponsors for the 2014 event.

Leaders such as Mr. Thomas Pillari are few and far between, and we are appreciative for the time he has dedicated to the LCCC Foundation over the past 12 years. We are equally pleased that he has agreed to remain on our Foundation Board beyond his tenure as Chairman.



During his tenure as Board Chairman, Mr. Pillari took the Transformations Campaign to the next level by using his extensive estate planning knowledge to help our most generous donors develop creative plans for legacy gifts – all during the Great Recession. Mr.

Pillari also protected the Foundation's interests from a legal perspective by reviewing contracts and agreements, revising our standard endowment fund donor agreement and participating in the Regulations Task Force that is revising the Foundation's governing document. A long-time participant and co-chair for the Jack Nicklaus

## FOUNDATION SUPPORTS OUR TROOPS VETERANS LOUNGE PROJECT

In addition to a diverse portfolio of scholarship funds, the LCCC Foundation also manages several programmatic funds designed to create a well-rounded student experience. As a community college support organization, there are often specific groups of students who have a unique set of needs that require special assistance and programing. One such group is military veterans.



During 2014, the LCCC Foundation launched a micro-campaign to raise funds in support of student veterans.

Thanks to the generosity of FirstMerit Bank's lead gift of \$10,000, the Foundation was able to raise enough money to sponsor the renovation of an open space on the second floor of College Commons – creating a Veterans Lounge dedicated to those who have served our country. Many veterans have expressed that they miss the camaraderie and strong relationships they built with those they served with once they transition to civilian life and then to life as a student. The Student Veterans Lounge is one way that the College can help to ease this transition to life as a student by giving veterans a space to gather and support one another as they advance their education.



The College was also recently named a Military Friendly School, gaining recognition for its ability to help veterans transition back to civilian life while pursuing their academic goals. Additional dollars raised from this campaign will be used to provide services to student veterans and scholarships to those attending LCCC or its University Partnership.







## JUDGE JOSEPH E. AND BEVERLY A. CIRIGLIANO STUDIO THEATRE DEDICATION

On August 29, 2014, an intimate crowd gathered at the Studio Theatre within the Stocker Arts Center to celebrate a lifetime of philanthropy. Hosted by the LCCC Foundation, the dedication event recognized Judge Joseph Cirigliano and his wife, Beverly, for generosity that has spanned three decades. In addition to their philanthropy, the Ciriglianos have dedicated their time and energy over the years to strengthen the College. Judge Cirigliano's tenure with Lorain County Community College began in 1969 with his appointment to the College's District Board of Trustees. Since that time, he has served as Chairman for the Foundation's Board of Directors, spearheaded the Jack Nicklaus Scholarship Golf Benefit, and advocated for affordable access to higher education.

"Joseph and Beverly are remarkably dedicated; dedicated to each other, dedicated to this college and dedicated to giving back to their community."

– Dr. Alexander Zolli



Creating a legacy of philanthropy has always been a goal for the Ciriglianos. In 1993 they established an endowed scholarship fund for Lorain County Community College students. By dedicating the Judge Joseph and Beverly Cirigliano Studio Theatre, the Foundation proudly adds the Cirigliano name to the growing list of families who are creating a campus of philanthropy at Lorain County Community College.



## DON'T LET US GO DARK

### VOLUNTEERS RAISE \$135,000 TO SAVE THE LCCC FILM SERIES

The LCCC Film Series has been delivering artistic, worldly, and thought-provoking films to students and the community since 1966. Widely attended, the film series offers 18 films annually, attracting a diverse audience averaging 4,000 students and community members each year. Recently, there have been advances in film technology and Stocker's 35mm equipment was not keeping pace. In anticipation of the film industry's conversion to 100% digital in 2015, a group of dedicated community members banded together and launched a grassroots campaign to save the film series.

Thanks to our dedicated committee who worked on this initiative, the Don't Let us Go Dark Campaign exceeded its goal of \$125,000 in just six short months. The all-volunteer committee consisted of Foundation board members, community members, and LCCC faculty and staff. This group worked tirelessly to ensure Lorain County continues to have access to artistic films. We are forever grateful for their dedication and support.

## DON'T LET US GO DARK COMMITTEE – THANK YOU!

**Dave and Sharon Herzer, Co-Chairs**  
**Janet Herman Barlow**  
**Sue Neiding Bender**  
**Robert and Inge Dudash**  
**Linda Gordon**  
**Karen Miraldi**  
**Ben and Jane Norton**  
**Thomas and Melissa Pillari**  
**John and Sue Schaeffer**





LORAIN COUNTY COMMUNITY COLLEGE FOUNDATION

BOARD OF DIRECTORS

Officers

**Thomas Pillari, Chairman**  
Chief Operations Officer,  
Wickens, Herzer, Panza, Cook & Batista

**Cathy Dietlin, Vice Chair**  
Retired, Director, P-16 Council

**The Hon. James L. Miraldi, Vice Chair**  
Lorain County Court of Common Pleas

**Phillip J. Baptiste , Treasurer**  
Partner, Cohen & Company, Ltd.

**Michael Bramhall, Secretary**  
President & Owner, Bramhall Engineering

**Thomas J. Smith, Assistant Secretary**  
Assistant Vice President, Business Organizations  
and Tax Department  
Wickens, Herzer, Panza, Cook & Batista

**Rose M. Jenne, Assistant Treasurer**  
Chairman, Jenne Distributors

**Roy A. Church, President**  
President, Lorain County Community College

**Tracy Green, Vice President**  
Vice President of Strategic and Institutional  
Development, Lorain County Community College

Directors

**Philip Amos**  
President, Chapman and Chapman, Inc.

**Daniel J. Carpenter**  
Vice President – Chief Technology Officer, Energizer

**Ronald A. Cocco**  
President, Clark & Post Architects, Inc.

**Jim Cordes**  
Lorain County Administrator

**Maureen Cromling**  
Chairman, Ross Environmental Services

**Kevin J. Flanigan**  
President, General Plug and Manufacturing Company

**John C. Gaudry**  
Retired, President, Rehabilitation Consultants

**Anthony Giardini**  
Attorney at Law, Bradley & Giardini Co., L.P.A.

**\*Lawrence Z. Goodman**  
Retired Owner, Goodman Beverage Company

**Dr. Marc Guay**  
Owner of E.N.T. & Allergy Health Services

**David L. Herzer**  
Official Counsel, Wickens, Herzer, Panza, Cook & Batista

**Maria Hoke**  
Senior Associate Council at PolyOne Corporation

**John R. Hruska**  
President, Hruska, Inc.

**John Hunter**  
Mayor, Sheffield Village  
Retired, Representative, UAW International Union

**Rustom Khouri**  
President & CEO, Carnegie Management

**Donald P. Knechtges**  
President, Business Visions

**Robert E. Knight**  
President, Knight Development Corporation

**Lee M. Koury**  
President and COO, Magazines and Events,  
Smart Business Network, Inc.

**Jack Matia**  
President, Jack Matia Chevrolet, Inc.

**Joseph McAleese**  
President & CEO, Bendix Commercial Vehicle Systems

**Kim Meyers**  
Attorney, Meyers Law Firm LLC

**Robert F. Monchein**  
Retired, Forest City Land Group

**Greg Mulach**  
President, Erie Shores, FirstMerit Bank

**Steve Myers**  
Vice President, Operations,  
Parker Hannifin Corporation

**Jane Norton**  
Retired Executive Director, The Stocker Foundation

**Daniel Reaser**  
President/CEO, American Hood Systems Inc.

**Judith A. Riddle**  
Owner, Riddle Funeral Home

**John W. Schaeffer**  
President, North Ohio Heart Center

**\*Michael Sherman**  
Retired, Regional Representative,  
Ohio State Association of the Plumbing  
and Pipefitting Industry

**Mark Skellenger**  
Vice President,  
KS Associates Civil Engineers & Surveyors

**Barry Smith**  
Director of Supply Management,  
The Lincoln Electric Company

**Nicole Sprenger**  
CEO of Corporate Services,  
Sprenger Health Care Systems

**Scott Sprenger**  
President & CEO, Continuing Healthcare

**Bruce E. Stevens**  
President & CEO, Buckeye Community Bank

**Albert A. Tegel**  
Retired, PNC Bank

**Greg Thaxton**  
Senior Vice President, Nordson Corporation

**Thomas N. Tyrrell**  
CEO, Great Lakes Biomimicry

**Ted Wallingford**  
Founder & CEO of Best Technology

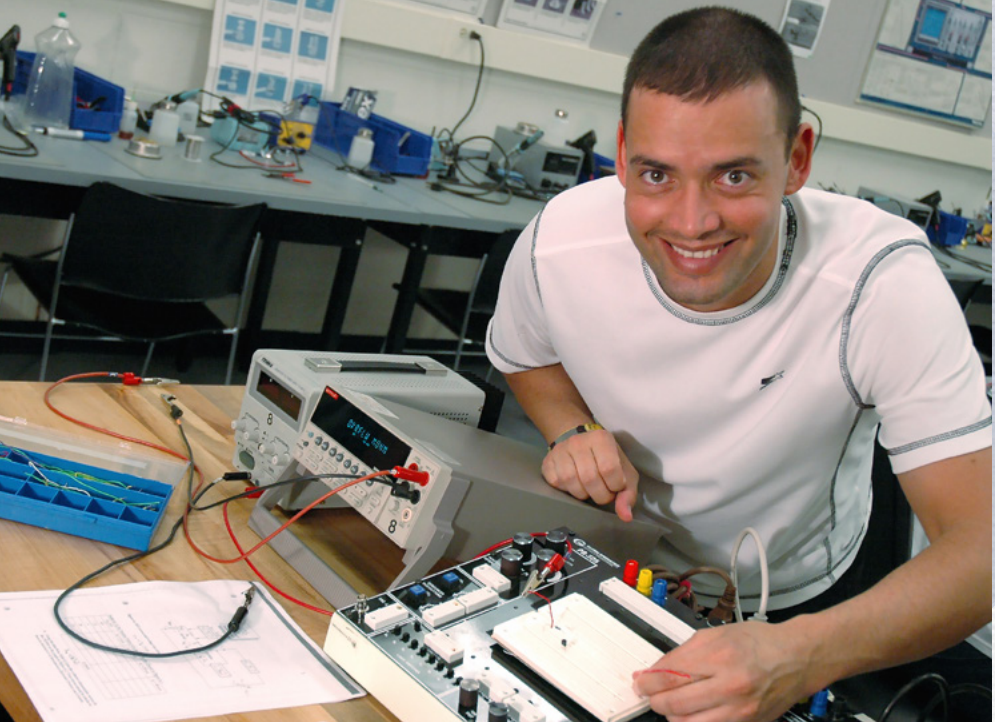
**Adrian Williams**  
President, Rehabilitation Consultants

**Dale P. Yost**  
Retired, Dale Yost Construction

**Lily T. Yuzon**  
Office Administrator, F.E. Yuzon, M.D., Inc.

**Alan M. Zang**  
President, NE Ohio, U.S. Bank

**Maria Ilvento Zolli**  
Practice Administrator, Center for Vascular  
and Thoracic Medicine and Surgery, Inc.



LORAIN COUNTY COMMUNITY COLLEGE FOUNDATION

STAFF

**Garis Distelhorst**  
Executive Director

**Michael Morgenstern**  
Director of Advancement

**Charles Wiersma**  
Finance and Operations Manager

**Debra Richter**  
Scholarship and Stewardship Officer

**Julie Strazzo**  
Resource Development Specialist

**Andrea Horning**  
Resource Development Specialist  
and Alumni and Special Events Coordinator

**Janet Emary**  
Administrative Associate

**Alison Musser**  
Communications and Fundraising Consultant

\*Denotes individuals who also serve on Lorain County Community College's District Board of Trustees.



LORAIN COUNTY COMMUNITY COLLEGE FOUNDATION  
STATEMENT OF FINANCIAL POSITION

AS OF JUNE 30, 2014

ASSETS	2014	2013
Cash and Cash Equivalents	\$824,241	\$320,407
Pledges (net)	\$4,646,841	\$5,185,117
Investments	\$32,909,847	\$29,502,341
Other Assets	\$28,484	\$17,538
<b>Total assets</b>	<b>\$38,409,413</b>	<b>\$35,025,403</b>
<b>LIABILITIES</b>	<b>\$190,644</b>	<b>\$313,310</b>
<b>NET ASSETS</b>		
Unrestricted	\$361,833	\$233,662
Temporarily Restricted	\$13,192,928	\$12,173,002
Permanently Restricted	\$24,664,008	\$22,305,429
<b>Total Net Assets</b>	<b>\$38,218,769</b>	<b>\$34,712,093</b>
<b>Total Liabilities and Net Assets</b>	<b>\$38,409,413</b>	<b>\$35,025,403</b>

LCCC FOUNDATION'S CORE AREAS OF IMPACT

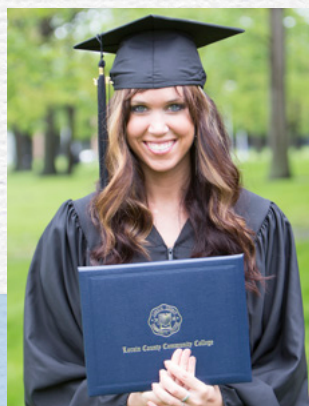
- ◆ Manages \$38 million in assets, ranking it among the top 10 largest community college foundations nationwide
- ◆ Maintains a Board of Directors consisting of 55 of the regions most influential and respected business and community leaders
- ◆ Provides support for new initiatives through general-purpose endowed funds including the New Opportunities Fund
- ◆ Manages nearly 195 named scholarship funds that provide more than \$620,000 in awards annually to students
- ◆ Supports the Stocker Arts Center through a long-standing endowment fund
- ◆ Provides \$50,000 in campus innovation grants annually to faculty and staff to pilot new projects
- ◆ Manages the LCCC Innovation Fund, which has provided more than \$9.1 million in pre-seed funding awards to start-up companies
- ◆ Provides faculty excellence awards annually to encourage excellence in teaching at Lorain County Community College

POINTS OF PRIDE

- ◆ Between 2005 and 2014, the LCCC Foundation grew its Net Assets by \$21.5 million or 128%
- ◆ In the last 10 years, LCCC welcomed 46,000 new students
- ◆ LCCC's University Partnership has graduated more than 4,000 students since 1995
- ◆ While maintaining high quality, LCCC has kept tuition low – third lowest in the State of Ohio
- ◆ Over 31,000 LCCC students have transferred to four-year institutions in the last 10 years, saving families thousands in college tuition and reducing student loan debt







 *Lorain County  
Community College*  
**FOUNDATION**  
*Providing the margin of excellence.*

1005 N ABBE ROAD • ELYRIA OH 44035  
(440) 366-4039